

RESEARCH PRESENTATIONS

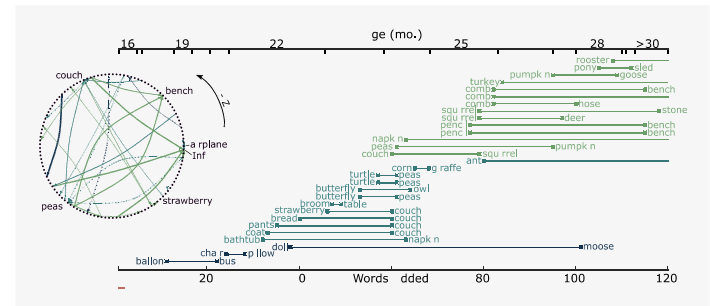
SYSTEM/COMPUTATIONAL

Chad Giusti

Curtis Johnson

Fabrizio Sergi

cgiusti@udel.edu



Mapping the Mechanical Properties of the Human Brain

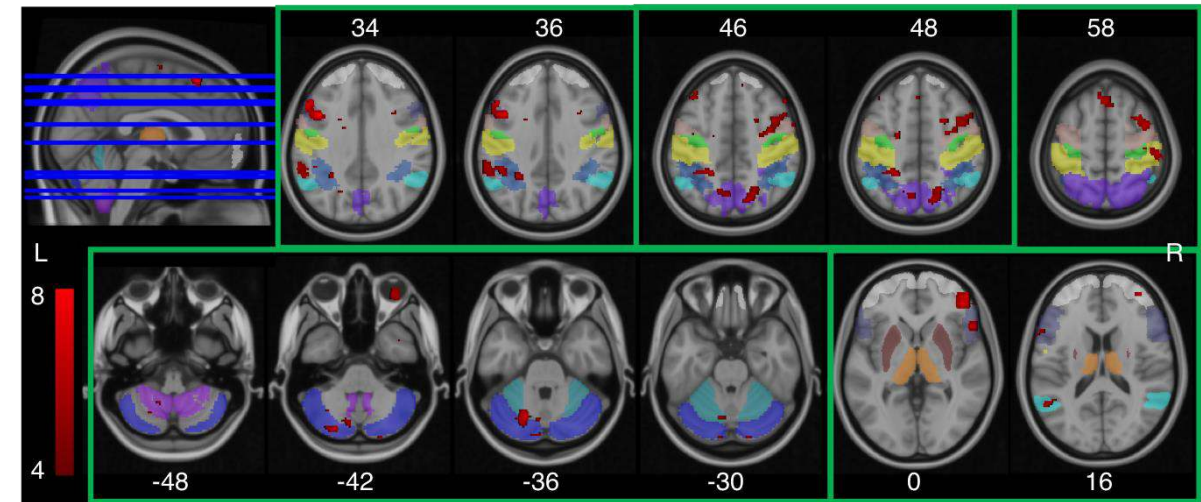
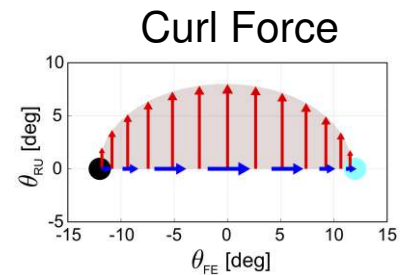
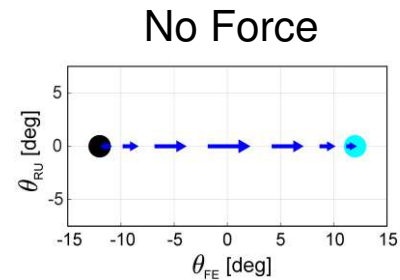
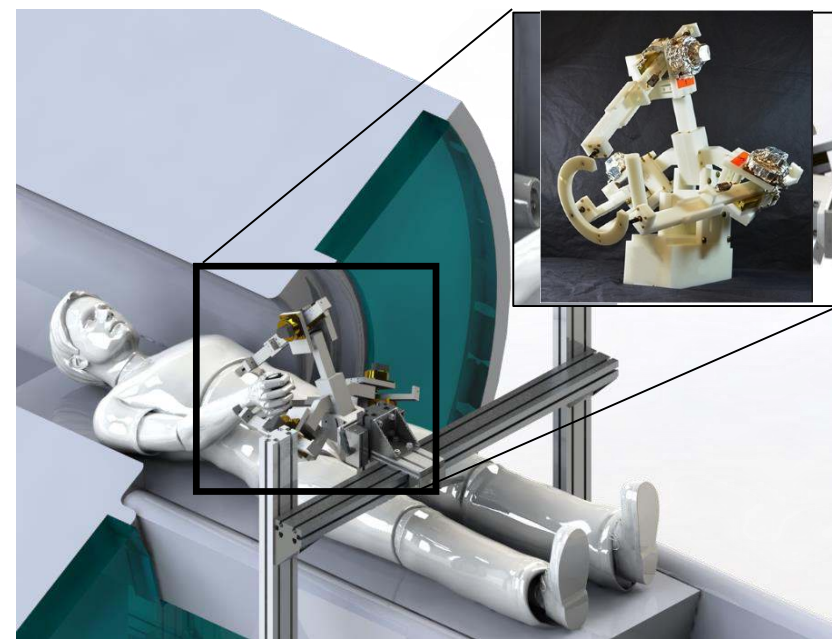


Human Robotics Research Group

PI: Fabrizio Sergi



MRI-compatible robotics: neural correlates of motor adaptation

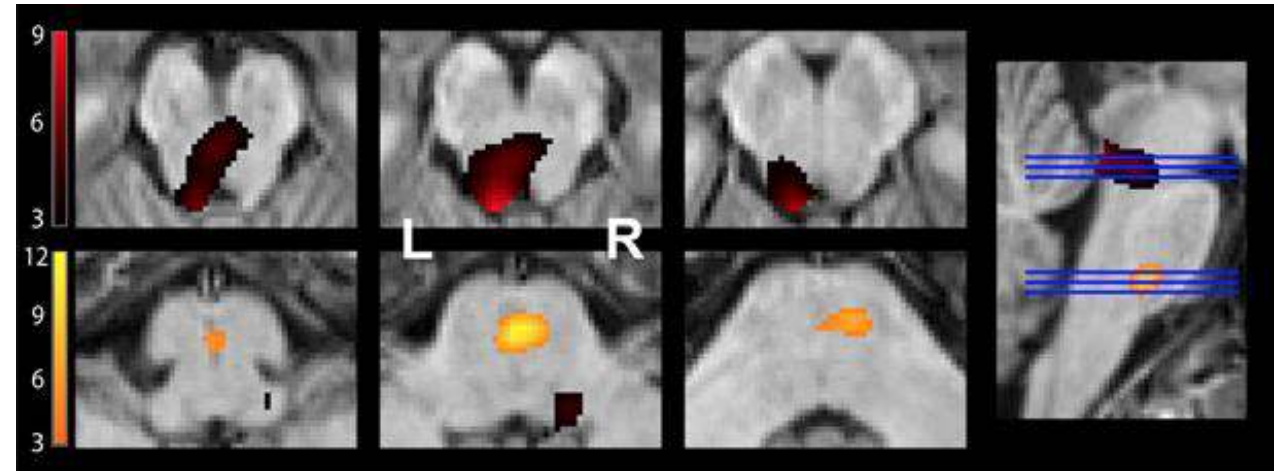
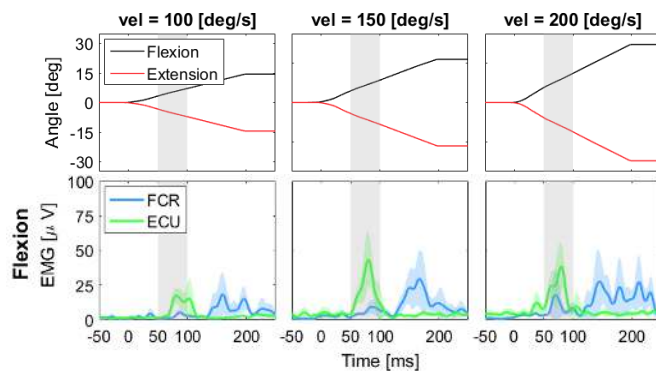


Human Robotics Research Group

PI: Fabrizio Sergi



MRI-compatible robotics: role of brainstem nuclei in long-latency responses



Human Robotics Research Group

PI: Fabrizio Sergi



Robot-assisted gait training: Response to multi-joint pulsed torque assistance

