

(The Meeting is Being Recorded for Posting Online)

Research Virtual Town Hall

Monday, January 10, 2022

2–3 p.m.



Agenda

1. Campus News
2. Dr. Kelly Frick, Student Health Services
3. COVID-19 & Research Updates
4. Questions – Zoom Q&A



Submit your questions using the Zoom Q&A Function

Mangone Young Scholars



Professor Tiffany Barber is driving research at the intersection of art history and the study of Black life that is yielding fresh, new perspectives for interpreting Black representation in visual art, performance and film.



Professor Curtis Johnson is pioneering a new technique to examine brain stiffness and how it relates to cognitive loss and diseases like Alzheimer's.

DENIN Fellows



The newest class of Delaware Environmental Institute (DENIN) Fellows includes, from left to right, Sean Fettrow, Vanessa Richards, Max Huffman, Lauren O'Connor, Hayden Boettcher, Paula Cardenas-Hernandez and Andrew Hill. Not pictured: Mary Hingst.



January 27, 2022

1–3 p.m.

Zoom Webinar

Federal funding agencies have distinct requirements as to who needs to complete RCR training. ***It is the responsibility of faculty and PIs to ensure that all personnel funded by their project(s) and required to complete RCR training do so in a timely manner consistent with the applicable agency policy.***

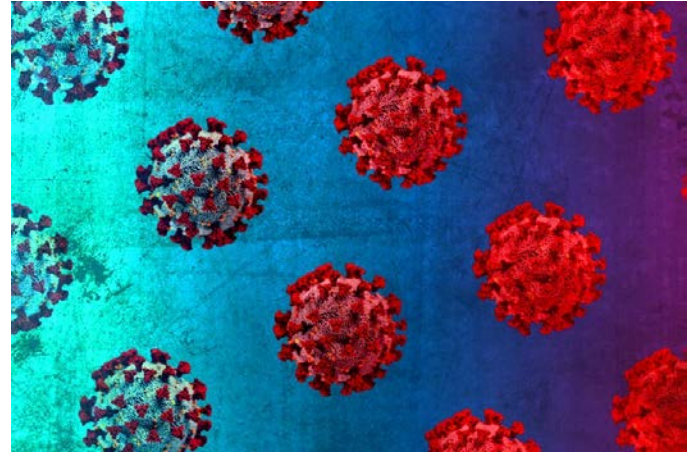
Co-sponsored by the Research Office and Graduate College



Dr. Kelly Frick
Interim Director
Student Health Services

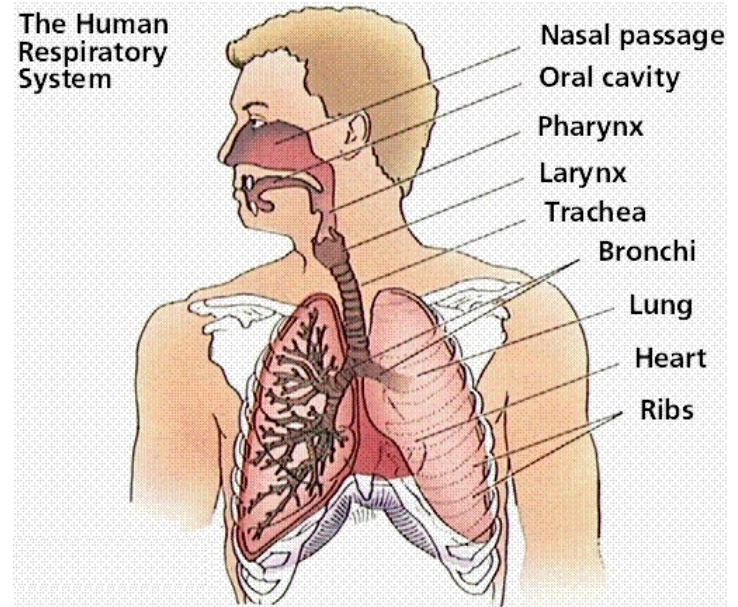
Omicron

- UD first noted Omicron cases in mid-late December
 - Overwhelming majority of our positive surveillance tests last week were consistent with Omicron
- R_0 of 10, meaning each person who has Omicron spreads it to 10 other people
 - This is comparable to Varicella (Chicken pox) and approaching Measles (13-17)
- There are a lot of people who have tested + for COVID (Omicron) in the past 14 days...
 - I'm sure you know of at least 10 in your own circle



Omicron

- Faster replication in upper airways (nasopharynx) compared to lower airways (bronchi / lung parenchyma)
- Disease severity is likely less than Delta. But the massive volume of people with Omicron will drive hospitalizations / death.
 - Hospitalizations will peak ~14 days after the peak of new cases
 - Deaths will peak ~21 days after the peak of new cases



Updates on COVID-19 transmission

- Less emphasis on shared surfaces
- Much more emphasis on shared air

Mask Distance

UD Mitigation Strategies – Winter Session

- Vaccine/Booster requirement for students (1/24/2022)
- De-densified residence halls
 - ~900 students living on campus
 - Only 102 have roommates
- Quarantine and Isolation Housing still available
- Dining Halls - Grab-and-Go
 - Indoor eating not permitted
- Little Bob adjustments
 - Basketball and racquetball courts closed



UD Mitigation Strategies – Winter Session

- Testing availability
 - Asymptomatic – UD Surveillance sites (M-Th)
 - PCR testing
 - Able to detect Spike gene drop out, which is suggestive of
 - Lab results available within 24-36 hours
 - Results flow automatically into the UD Health Portal
 - Symptomatic (Students only) – Student Health Services
 - Rapid molecular testing
 - PCR testing

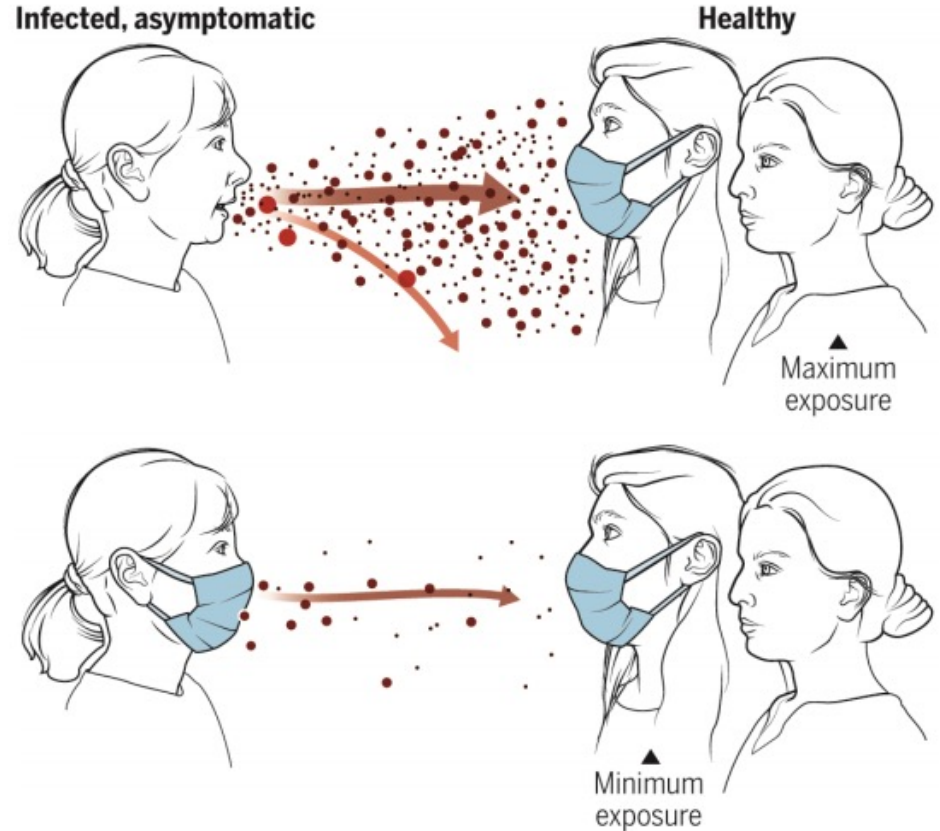
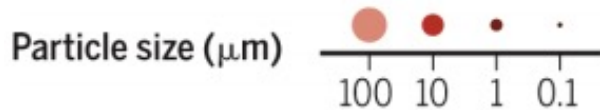




 ADAM.

Masks reduce airborne transmission

Infectious aerosol particles can be released during breathing and speaking by asymptomatic infected individuals. No masking maximizes exposure, whereas universal masking results in the least exposure.



What protects against COVID-19 infection or transmission?

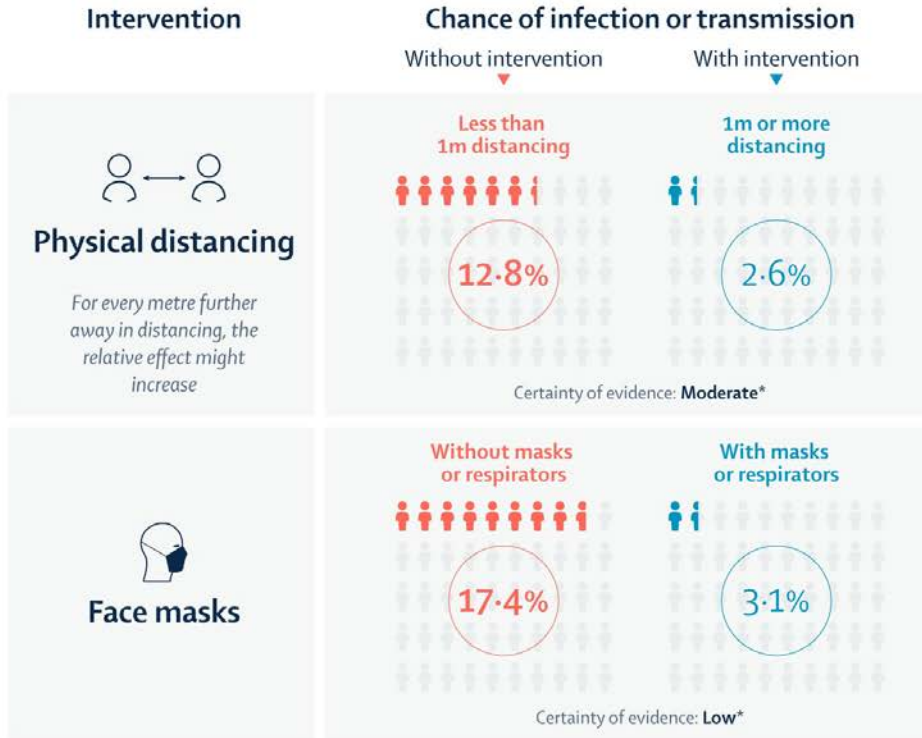


Table 1. Time to Infectious Dose for an Uninfected Person (Receiver)*

		Receiver is wearing (% inward leakage)					
		Nothing	Typical cloth mask	Typical surgical mask	Non-fit-tested N95 FFR	Fit-tested N95 FFR	
Source is wearing (% outward leakage)			100%	75%	50%	20%	10%
Nothing	100%	15 min	20 min	30 min	1.25 hr	2.5 hr	
Typical cloth mask	75%	20 min	26 min	40 min	1.7 hr	3.3 hr	
Typical surgical mask	50%	30 min	40 min	1 hr	2.5 hr	5 hr	
Non-fit-tested N95 FFR**	20%	1.25 hr	1.7 hr	2.5 hr	6.25 hr	12.5 hr	
Fit-tested N95 FFR	10%	2.5 hr	3.3 hr	5 hr	12.5 hr	25 hr	

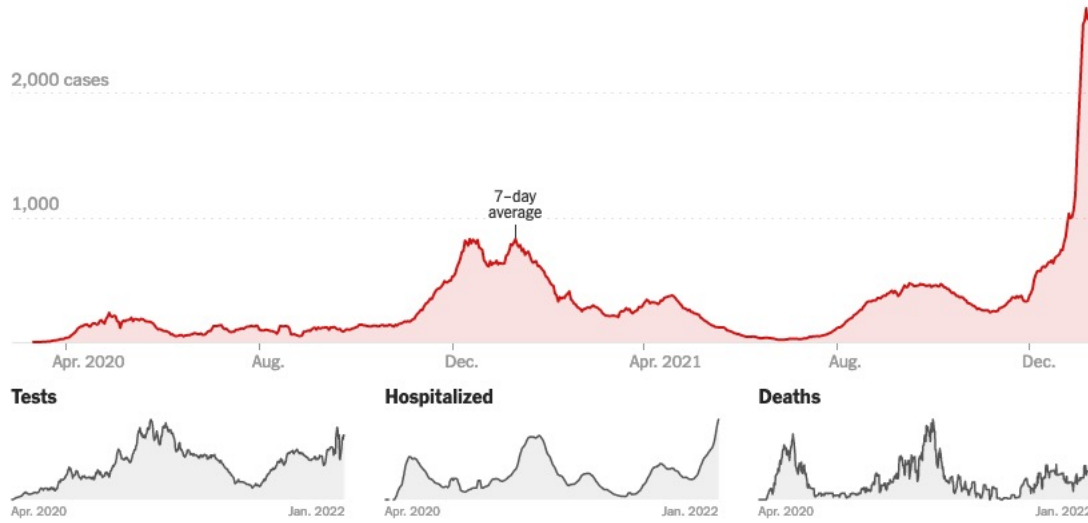
*The data for % inward and outward leakage of cloth and surgical masks were derived from a study by Lindsley et al (2021). Data for non-fit-tested N95 FFRs come from a study by Brosseau (2020). Data for fit-tested N95 FFRs are derived from the OSHA-assigned protection factor of 10 for half-facepiece respirators. Also, times were established before wide circulation of the more transmissible Delta variant.

**FFR = filtering facepiece respirator; N95 = not oil-proof, 95% efficient at NIOSH filter test conditions

DE COVID-19 Updates

State of Delaware Statistics

Data reported 1/10/22

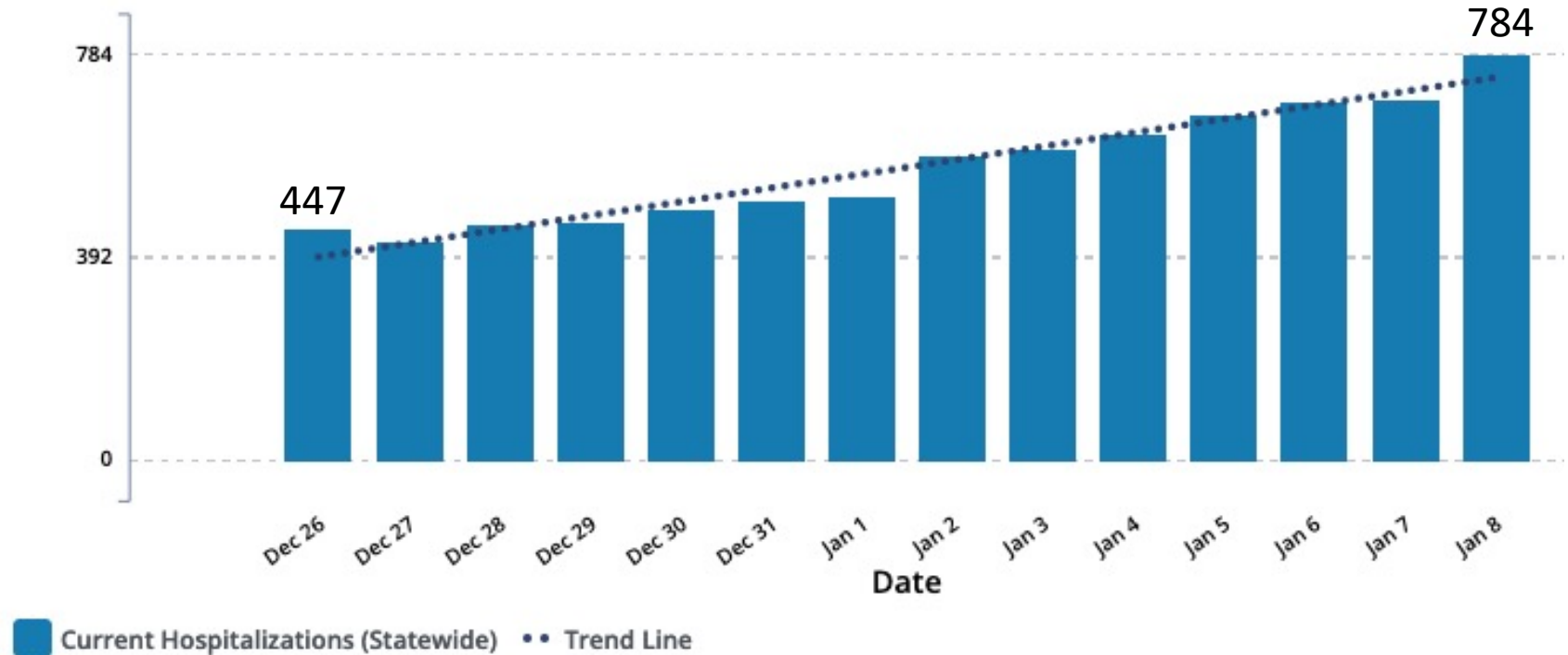


DE Positivity Rate
28.3%
 (12/13/21: 9.2%)

	DAILY AVG. ON JAN. 9	14-DAY CHANGE	TOTAL REPORTED
Cases	2,663	+159%	205,640
Tests	8,751	-5%	—
Hospitalized	638	+57%	—
Deaths	11	+114%	2,365

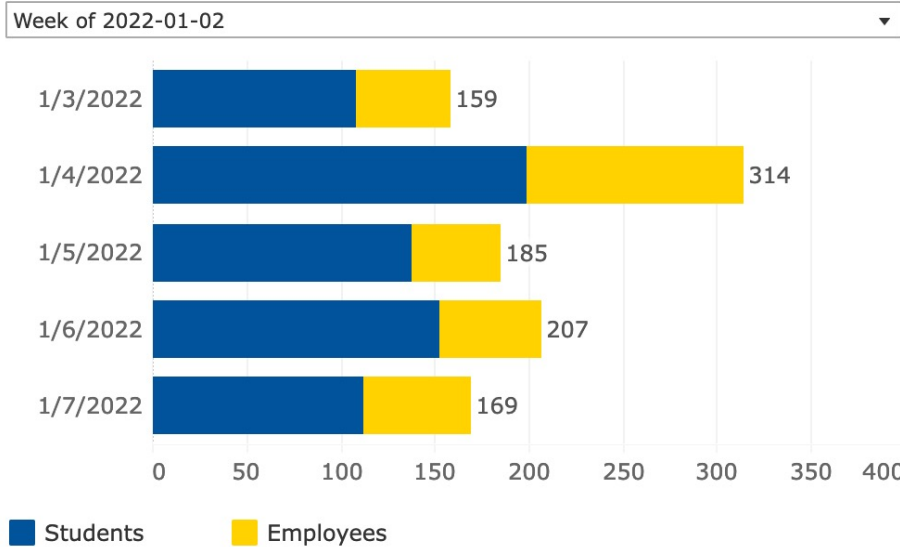
State of Delaware Current Hospitalizations

1/10/22

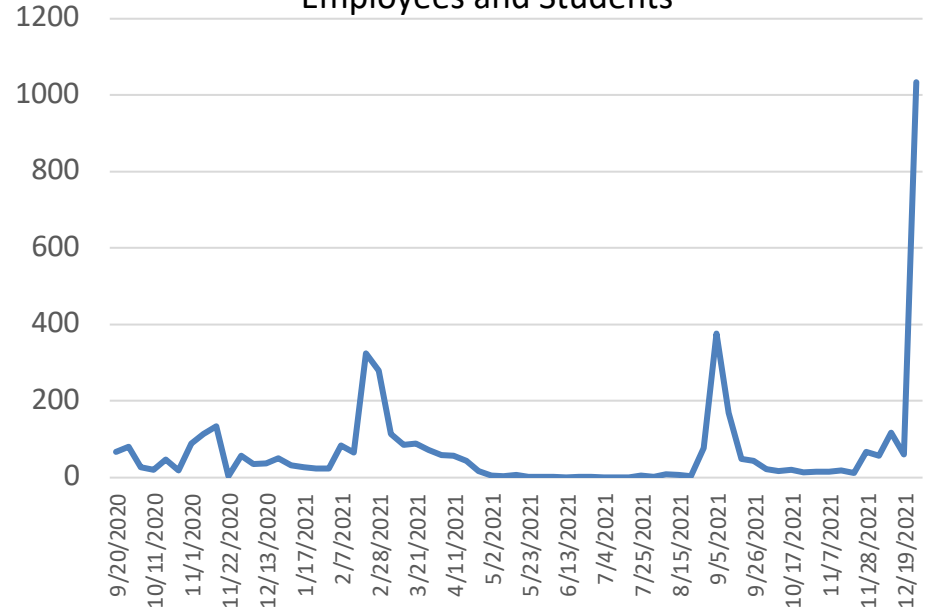


UD COVID Dashboard

Daily New Positive Cases

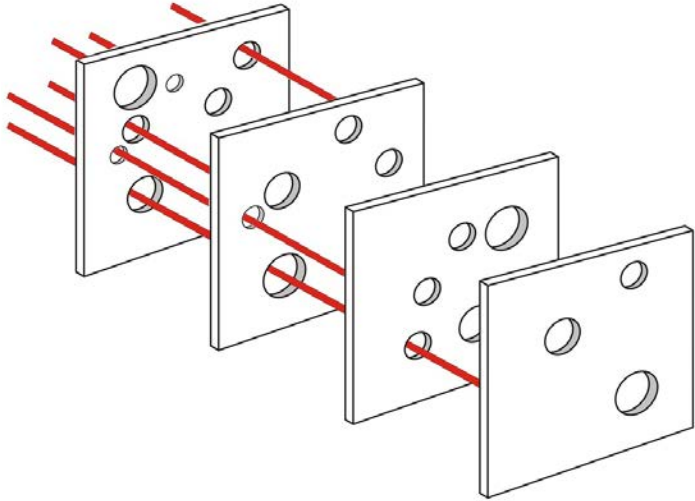


Positive Cases by Week Employees and Students



Campus (Asymptomatic) Surveillance Testing. $729/6048 = 12\%$

COVID-19 Risk Mitigation



Health screening

Physical distancing

Hand washing

Masks

Testing

Contact tracing

Isolating/Quarantining

Vaccines/Boosters

Employee Vaccination

Employee vaccination mandate update

The Executive Order from the federal government requiring COVID-19 vaccine for all UD employees has halted as decisions play out in the federal courts.

All coronavirus health and safety protocols remain in place.

Goal: To keep campus safe by immunizing as many people as possible.

Safeguard Your Health

Get vaccinated against COVID-19 or get a booster shot.

Upload your COVID-19 vaccination card. Upload again once you receive the booster. [UD Health Portal](#)

Get the flu vaccine. Employees visit [vaccines.gov](#) to find and schedule a flu shot; students can go to [Student Health Services](#)

I tested positive for COVID-19

Anyone who receives positive COVID-19 test results at a non-UD testing site is required to upload their results to the [UD Health Portal](#).

You must isolate for a minimum of **7 full days**.

The day of symptoms onset or a positive test is Day Zero. On the morning of your 8th day, if you have not had a fever for 24 hours and your other symptoms have improved or resolved, you may end your isolation.

If your symptoms have not improved, you must continue isolation for up to 10 days.

Continue to wear a well-fitted face mask at all times.

How did UD decide on 7 Days?

CDC Guidance Shifts

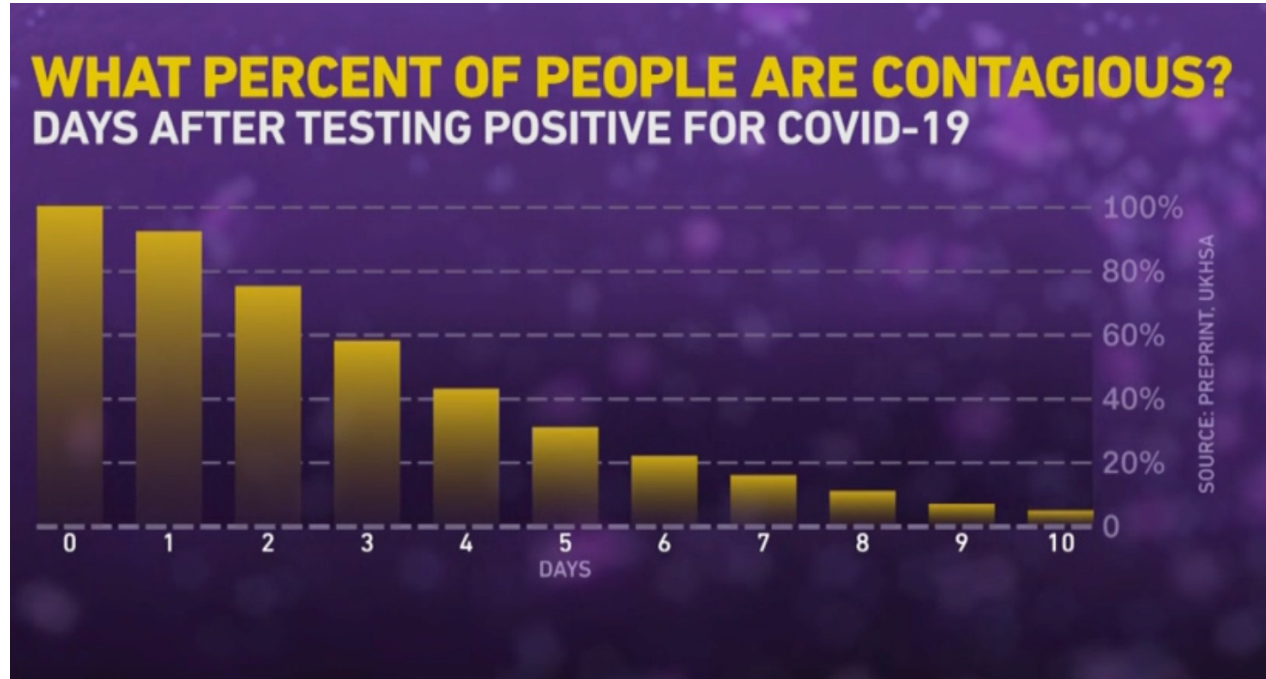
14 days

to

10 days

To

5 days



Updated Masking Guidance

Given the high transmissibility of the Omicron coronavirus variant, UD requires a well-fitted mask worn properly, with specific recommendation of a **surgical mask** or **KN95** mask in accordance with mask instructions.

Masking required in all indoor locations **including instructors/speakers in classrooms.**

Not required for healthy students in their own residence room or individuals alone in an office/room with the door closed.



I have been in close contact with someone who tested positive

Vaccinated and Boosted	No quarantine necessary; continue to properly wear a well-fitted face mask around others and monitor for symptoms for 7 days. It is recommended that you get tested 5 days after exposure.
Vaccinated but not yet <u>Eligible for Booster</u>	No quarantine necessary; continue to properly wear a well-fitted face mask around others and monitor for symptoms for 7 days. It is recommended that you get tested 5 days after exposure or when any symptoms develop.
Vaccinated, <u>Eligible for Booster</u>, Not Yet Boosted	You must quarantine for 7 full days and monitor for symptoms. Get tested 5 days after exposure, or when any symptoms develop. Continue to properly wear a well-fitted face mask at all times.
Not Vaccinated with Exemption	You must quarantine for 7 full days and monitor for symptoms. Get tested 5 days after exposure, or when any symptoms develop. Continue to properly wear a well-fitted face mask at all times.

Mandatory Testing



All students, faculty and staff who will be on the campus during Winter Session, regardless of vaccination status, were required to complete surveillance testing at UD testing sites during the week of Jan. 3, 2022. **This pertains to all members of the UD community who are accessing any UD facility at any time during Winter Session.**

If you are coming to campus later in the semester and have not tested, you are required to test within 5 days of returning to work.

Boosters

As previously announced, all students without an exemption are required to receive a booster by January 24, 2022 (or when eligible for a booster).

All faculty and staff are strongly encouraged to get the booster as soon as possible/eligible.

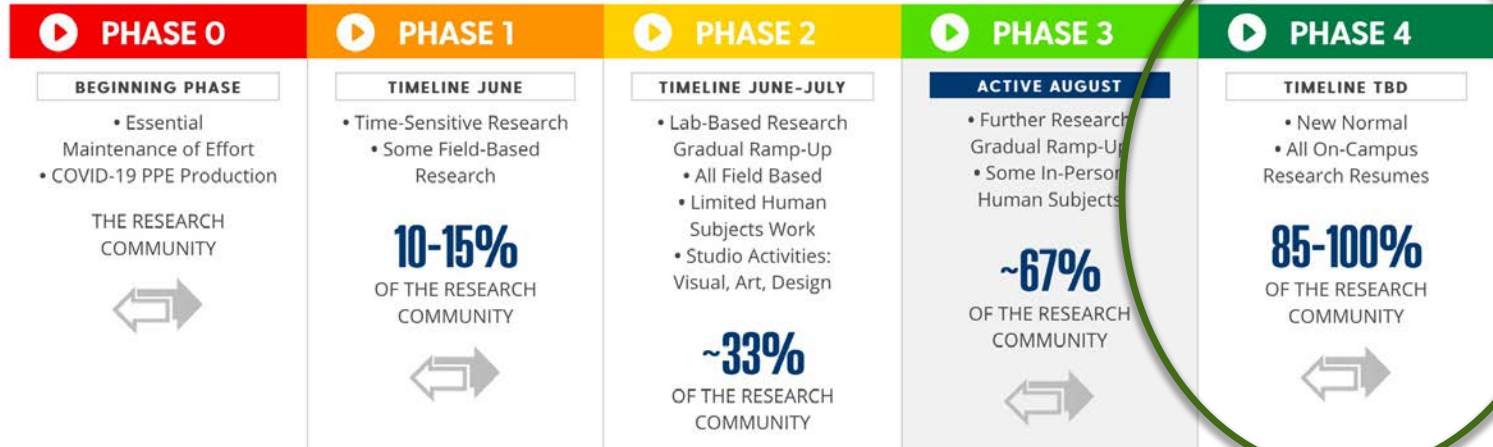


Upload Vaccination and Booster documentation – [UD Health Portal](#).



Research Ramp-Up Phases

Click on each phase for more details. We are now reviewing PI request forms for Phase 3. If you already have campus access and are bringing additional coworkers on-site and/or accessing additional space you must submit a new Phase 3 request.



Winter Session Updates

Classes that were temporarily moved online for the first week are in-person effective today, Jan. 10th.



The free drop date for Winter Session classes has been moved to **January 28**, which is now the last day to drop a class with a full tuition refund, no grade and no “W” recorded on the transcript.

January 28 is also the deadline for making a registration change to pass/fail or audit.

Students will still be responsible for meal plans and other fees.

Remote Work Continues

Remote work will continue for those offices where in-person interaction is not required.

Units that were considering moving to a more hybrid model early in 2022 have been asked to pause those plans for now.

In-person gatherings are strongly encouraged to shift to virtual modality.

Staff with questions should contact their supervisors.



Campus COVID-19 Testing

Testing limited to students, faculty and staff who are on-campus for Winter Session.
Do not test more than once per week.

Mondays through Thursdays. Registration required. No walk-ups.

Harker ISE Lab, 9 am–12:45 pm <https://udel.edu/book/harker-ise-lab>

Pencader 115, 10 am–1:45 pm <https://udel.edu/book/universityofdelaware600>
(Beginning Jan. 11th, Pencader testing moving to Clayton Hall)

Campus COVID-19 Testing

Testing for students, faculty and staff who are NOT on-campus for Winter Session.

PCR home test kit. If you are not a state of Delaware resident, you are permitted to use your UD work address upon registration.

<https://coronavirus.delaware.gov/testing/home-test-kit/>

Many pharmacies in the Newark area offer COVID-19 testing.

Search: <https://coronavirus.delaware.gov/testing-events/?Filter=0&StartDate=2022-01-10&CurrentDate=2022-01-10&ContentProvider=0>

Hudson State Service Center, 501 Ogletown Rd, Newark. Call ahead for details: 302-283-7570

Curative Pop-Up Trailers. Generally, the trailers are on campus Tuesdays at Conover Apartments, 97 Amstel Avenue and Fridays at Laird Parking Lot #6. Curative Pop-Up trailer events throughout Delaware. Search: <https://book.curative.com/search#9/39.68/-75.74>

Campus COVID-19 Booster Clinics

Room 106 of the Pencader Dining Hall

Wednesday, **January 19th** 2–6 p.m.

Friday, **January 21st** 10 a.m.–2 p.m.

Friday, **January 28th** 10 a.m.–2 p.m.

Wednesday, **February 2nd** 3–6 p.m.

Register [here](#) for any of these clinics.

Remember to update your records at the [UD Health Portal](#).

Research, Scholarship & Creative Activities

Travel Guidelines

UD employees and students are strongly encouraged to participate virtually in research activities/conferences, whether domestic or international, and postpone research travel whenever possible.

Due to the increase in travel restrictions imposed as a consequence of the Omicron variant, UD travel is being re-evaluated in consultation with UD Risk Management and our insurance carriers.



Sponsored Research Updates and Reminders

UD Policy on Conflicts of Interest (Policy 6-11)

To promote and support objectivity in research and education activities

- Involvement of faculty and professional staff with appropriate commercial enterprises to enrich teaching and research activities is encouraged by the University.
- It should be such that it benefits all the parties involved including the University.
- Requires that significant financial interests of faculty, staff and other members of the University-research community be disclosed.
- Provides means for managing conflicts of interest when they arise.

Disclose, Disclose, Disclose

Investigator Disclosures

When

- **Annually:** All Investigators must submit an updated disclosure of SFI at least annually.
- **Within 30 days:** Investigators must submit an updated disclosure of SFI within 30 days of discovering or acquiring (e.g., through purchase, marriage, or inheritance) a new SFI.
- **Time of Proposal Submission:** UD conflict of interest disclosure form must be completed before a funding application is submitted.

Other Support Disclosures

Federal sponsoring agency policy for disclosing “other support” are evolving rapidly.

NIH. Expected starting May 25, 2021; **required starting January 25, 2022.**

DEFINITION of “Other Support”: (NIH Grants Policy Statement, April 2021)

...includes all resources made available to a **researcher, senior key personnel or other individuals** who contribute to the scientific development or execution of a project in a substantive, measurable way, in support of and/or related to all of their research endeavors, regardless of whether or not they have monetary value and regardless of whether they are based at the institution the researcher identifies for the current grant. Other support does not include training awards, prizes, start-up support from the US based institution, or gifts.

Other Support Disclosures

When to Report

- Just-in-Time (upon request by NIH after proposal submission but prior to award).
- After Just-in-Time but prior to receipt of award (reporting required only if changes are substantive)
- Via Prior Approval Request for substantive changes that occur during the award period, but prior to the due date of the next RPPR.
- Research Performance Progress Reports (annual progress reports) – report changes only
- Upon request by NIH.

Supporting Documentation

Provide copies of contracts specific to senior/key-personnel foreign appointments and/or employment with a foreign institution for all foreign activities and resources that are reported in Other Support. If contracts are not in English, recipients must provide translated copies.

Questions

Submit your questions via the Zoom Q&A



Next Town Hall
Monday, February 14th

2–3 pm

udresearch@udel.edu